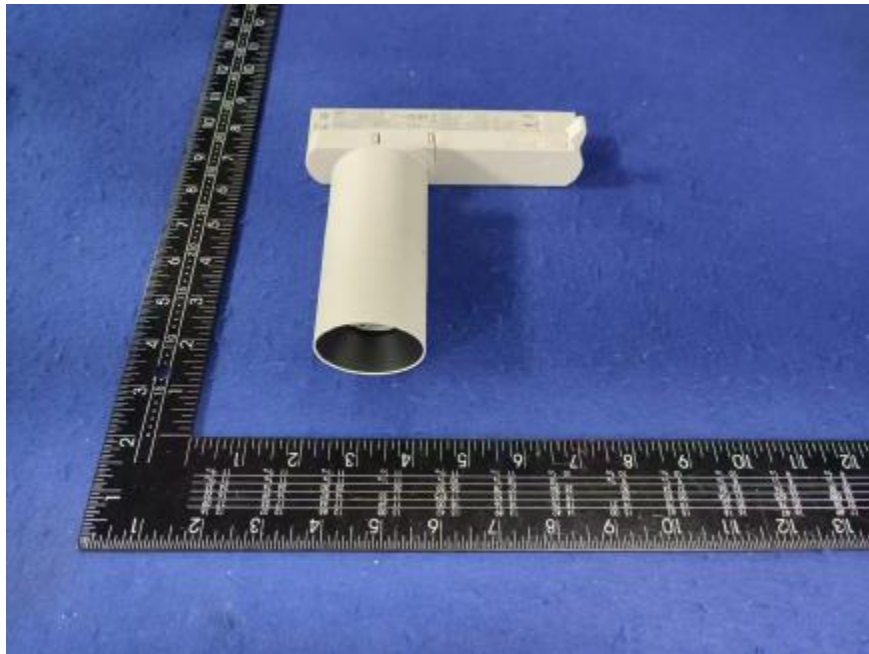


Luminaire Photograph



Light Output Ratio:	85.3%	
Luminaire Power:	11.23 W	
SHR Nominal:	0.50	Calculated using the TM5
SHR Maximum:	0.60	fine grid method.

C Range: 0 - 360DEG
C Interval: 30.0DEG
Test Speed: HIGH
Temperature: 25.3 °C
Operators: zoe
Test Date: 2024-9-12

γ Range: 0 - 180DEG
 γ Interval: 1.0DEG
Test System: EVERFINE GO-SPEX500_V1 SYSTEM V2.00.461
Humidity: 65.0%
Test Distance: 3.160m [K=1.0000]
Remarks: LAMP: BXRH-30G10T0-C-83 Ra: 90
LENS: PM-1082B 36R
DRIVER: SC20W150-500CG-4W 300mA
30minutes warm-up

LUMINOUS INTENSITY DISTRIBUTION DIAGRAM

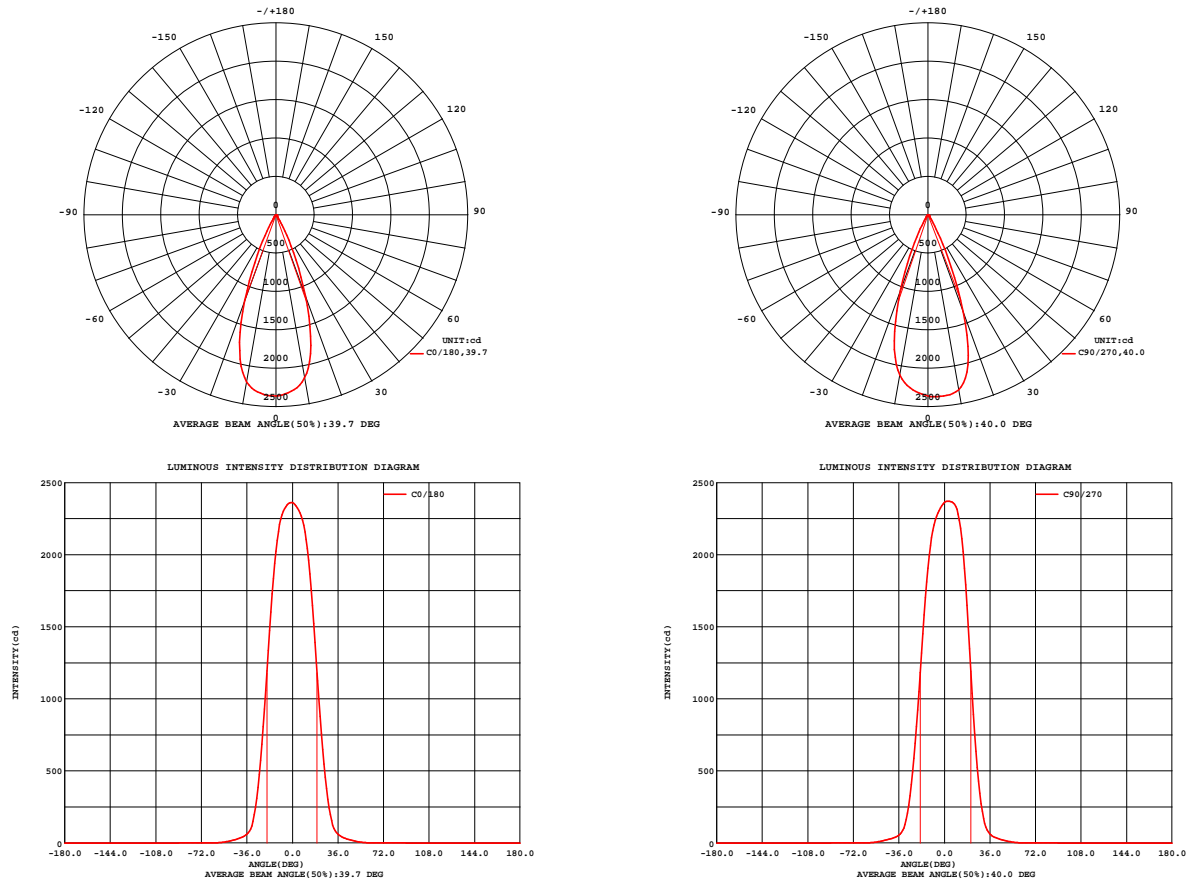


Fig. C0/C180

Fig. C90/C270

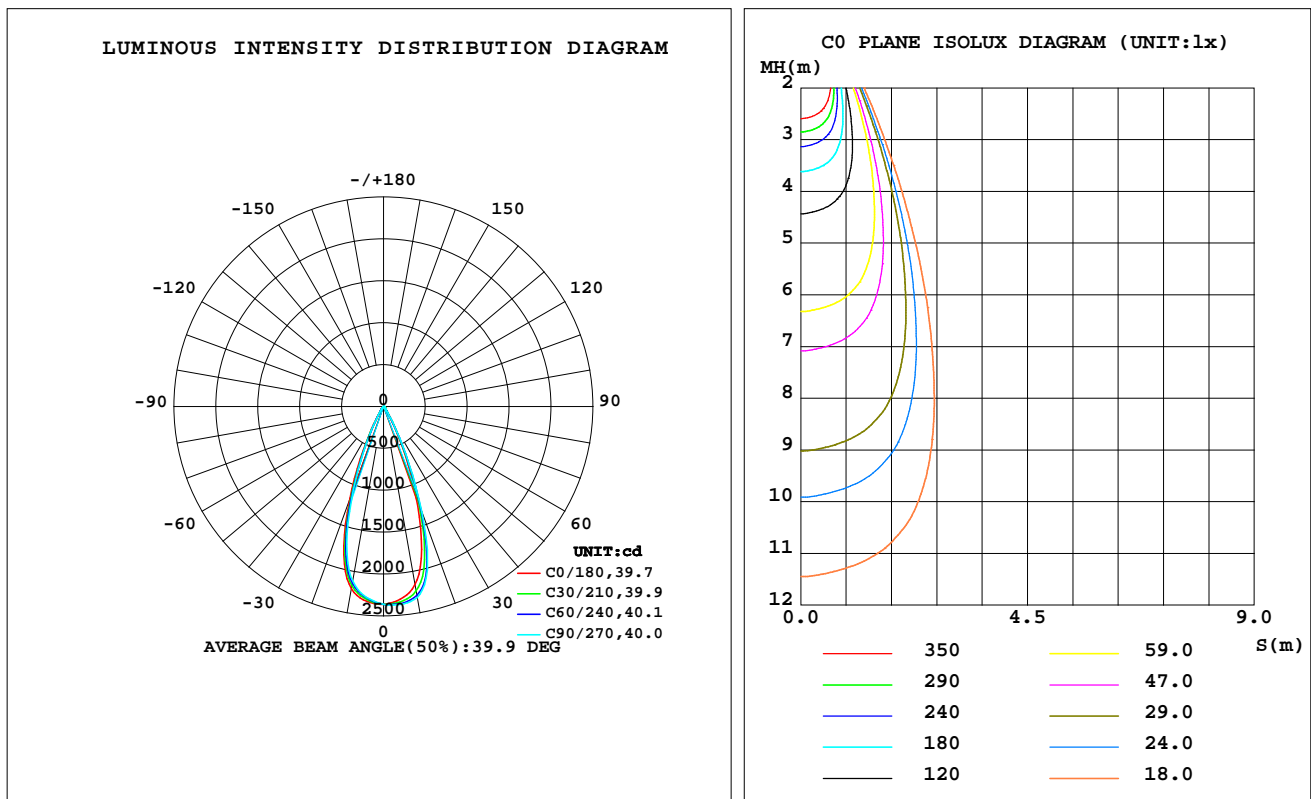
C Range: 0 - 360DEG
C Interval: 30.0DEG
Test Speed: HIGH
Temperature: 25.3 °C
Operators: zoe
Test Date: 2024-9-12

γ Range: 0 - 180DEG
 γ Interval: 1.0DEG
Test System: EVERFINE GO-SPEX500_V1 SYSTEM V2.00.461
Humidity: 65.0%
Test Distance: 3.160m [K=1.0000]
Remarks: LAMP: BXRH-30G10T0-C-83 Ra: 90
LENS: PM-1082B 36R
DRIVER: SC20W150-500CG-4W 300mA
30minutes warm-up

LUMINAIRE PHOTOMETRIC TEST REPORT

Test:U:220.18V I:0.0593A P:11.226W PF:0.8546 Freq:49.99Hz Lamp Flux:1227.27x1 lm		
NAME: 2419.205-UA-300	TYPE:	WEIGHT:
SPEC.: 3000K	DIM.:	SERIAL No.: 2409121199
MFR.: RISE	SUR.: 0.001884785m2	Shielding Angle:

DATA OF LAMP		PHOTOMETRIC DATA Eff: 93.27 lm/W			
MODEL	Brideglux	I _{max} (cd)	2370	S/MH(C0/180)	0.61
NOMINAL POWER(W)	11	LOR(%)	85.3	S/MH(C90/270)	0.59
RATED VOLTAGE(V)	220	TOTAL FLUX(lm)	1047.1	η UP,DN(C0-180)	0.0,44.7
NOMINAL FLUX(lm)	1227.27	CIE CLASS	DIRECT	η UP,DN(C180-360)	0.0,40.7
LAMPS INSIDE	1	η up(%)	0.0	CIBSE SHR NOM	0.50
TEST VOLTAGE(V)	220	η down(%)	85.3	CIBSE SHR MAX	0.60



C Range: 0 - 360DEG
C Interval: 30.0DEG
Test Speed: HIGH
Temperature:25.3℃
Operators:zoe
Test Date:2024-9-12

γ Range: 0 - 180DEG
γ Interval: 1.0DEG
Test System:EVERFINE GO-SPEX500_V1 SYSTEM V2.00.461
Humidity:65.0%
Test Distance:3.160m [K=1.0000]
Remarks: LAMP:BXRH-30G10T0-C-83 Ra:90
LENS:PM-1082B 36R
DRIVER:SC20W150-500CG-4W 300mA
30minutes warm-up

ZONAL FLUX DIAGRAM

ZONAL FLUX DIAGRAM:

γ	C0	C45	C90	C135	C180	C225	C270	C315	γ	Φ zone	Φ total	%lum,lamp
10	2156	2263	2315	2261	2210	2158	2116	2108	0- 10	218.1	218.1	20.8,17.8
20	1124	1270	1346	1268	1194	1105	1050	1068	10- 20	488.5	706.6	67.5,57.6
30	195.6	215.0	221.7	203.5	196.9	171.3	163.8	179.7	20- 30	265.4	972.0	92.8,79.2
40	39.30	40.66	39.23	39.02	39.77	38.38	35.99	37.34	30- 40	51.33	1023	97.7,83.4
50	11.63	11.90	12.66	12.88	12.78	12.44	12.25	11.94	40- 50	18.27	1042	99.5,84.9
60	1.129	1.368	1.478	1.531	1.549	1.520	1.540	1.253	50- 60	5.004	1047	100,85.3
70	0.1236	0.1247	0.1330	0.1353	0.1293	0.1165	0.1096	0.1052	60- 70	0.3975	1047	100,85.3
80	0.0547	0.0487	0.0558	0.0460	0.0505	0.0404	0.0478	0.0400	70- 80	0.0833	1047	100,85.3
90	0	0	0	0	0	0	0	0	80- 90	0.0295	1047	100,85.3
100	0	0	0	0	0	0	0	0	90-100	0	1047	100,85.3
110	0	0	0	0	0	0	0	0	100-110	0	1047	100,85.3
120	0	0	0	0	0	0	0	0	110-120	0	1047	100,85.3
130	0	0	0	0	0	0	0	0	120-130	0	1047	100,85.3
140	0	0	0	0	0	0	0	0	130-140	0	1047	100,85.3
150	0	0	0	0	0	0	0	0	140-150	0	1047	100,85.3
160	0	0	0	0	0	0	0	0	150-160	0	1047	100,85.3
170	0	0	0	0	0	0	0	0	160-170	0	1047	100,85.3
180	0	0	0	0	0	0	0	0	170-180	0	1047	100,85.3
DEG	LUMINOUS INTENSITY:cd									UNIT:lm		

C Range: 0 - 360DEG
C Interval: 30.0DEG
Test Speed: HIGH
Temperature:25.3℃
Operators:zoe
Test Date:2024-9-12

γ Range: 0 - 180DEG
 γ Interval: 1.0DEG
Test System:EVERFINE GO-SPEX500_V1 SYSTEM V2.00.461
Humidity:65.0%
Test Distance:3.160m [K=1.0000]
Remarks: LAMP:BXRH-30G10T0-C-83 Ra:90
LENS:PM-1082B 36R
DRIVER:SC20W150-500CG-4W 300mA
30minutes warm-up

LUMINANCE LIMITATION CURVES

Test:U:220.18V I:0.0593A P:11.226W PF:0.8546 Freq:49.99Hz
Lamp Flux:1227.27x1 lm

NAME: 2419.205-UA-300

TYPE:

WEIGHT:

SPEC.: 3000K

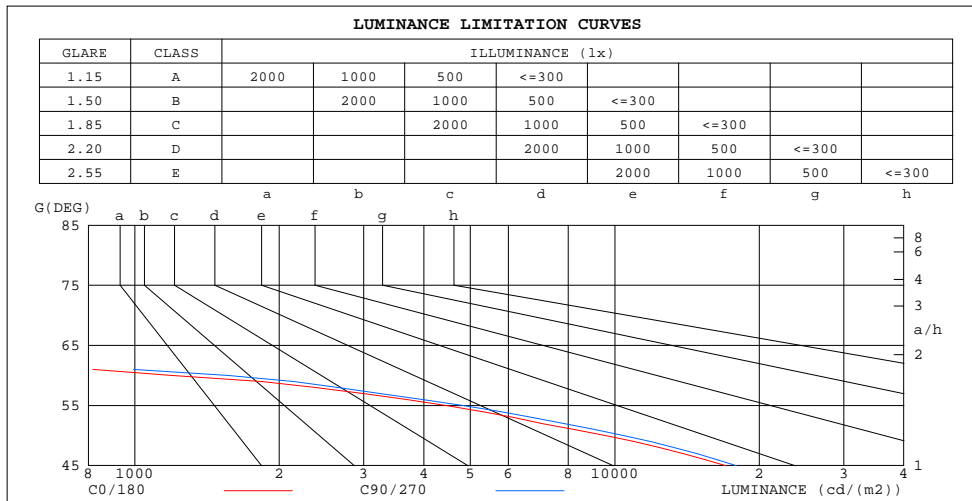
DIM.:

SERIAL No.: 2409121199

MFR.: RISE

SUR.: 0.001884785m2

Shielding Angle:



LUMINANCE cd/(m2)		
G(180)	C0/180	C90/270
85	218	232
80	167	171
75	164	180
70	192	206
65	340	353
60	1197	1568
55	4463	4840
50	9589	10450
45	17051	17927

C Range: 0 - 360DEG
C Interval: 30.0DEG
Test Speed: HIGH
Temperature:25.3℃
Operators:zoe
Test Date:2024-9-12

γ Range: 0 - 180DEG
γ Interval: 1.0DEG
Test System:EVERFINE GO-SPEX500_V1 SYSTEM V2.00.461
Humidity:65.0%
Test Distance:3.160m [K=1.0000]
Remarks: LAMP:BXRH-30G10T0-C-83 Ra:90
LENS:PM-1082B 36R
DRIVER:SC20W150-500CG-4W 300mA
30minutes warm-up

CU AND LUMINAIRE BUDGETARY ESTIMATE DIAGRAM

Test:U:220.18V I:0.0593A P:11.226W PF:0.8546 Freq:49.99Hz
Lamp Flux:1227.27x1 lm

NAME: 2419.205-UA-300

TYPE:

WEIGHT:

SPEC.: 3000K

DIM.:

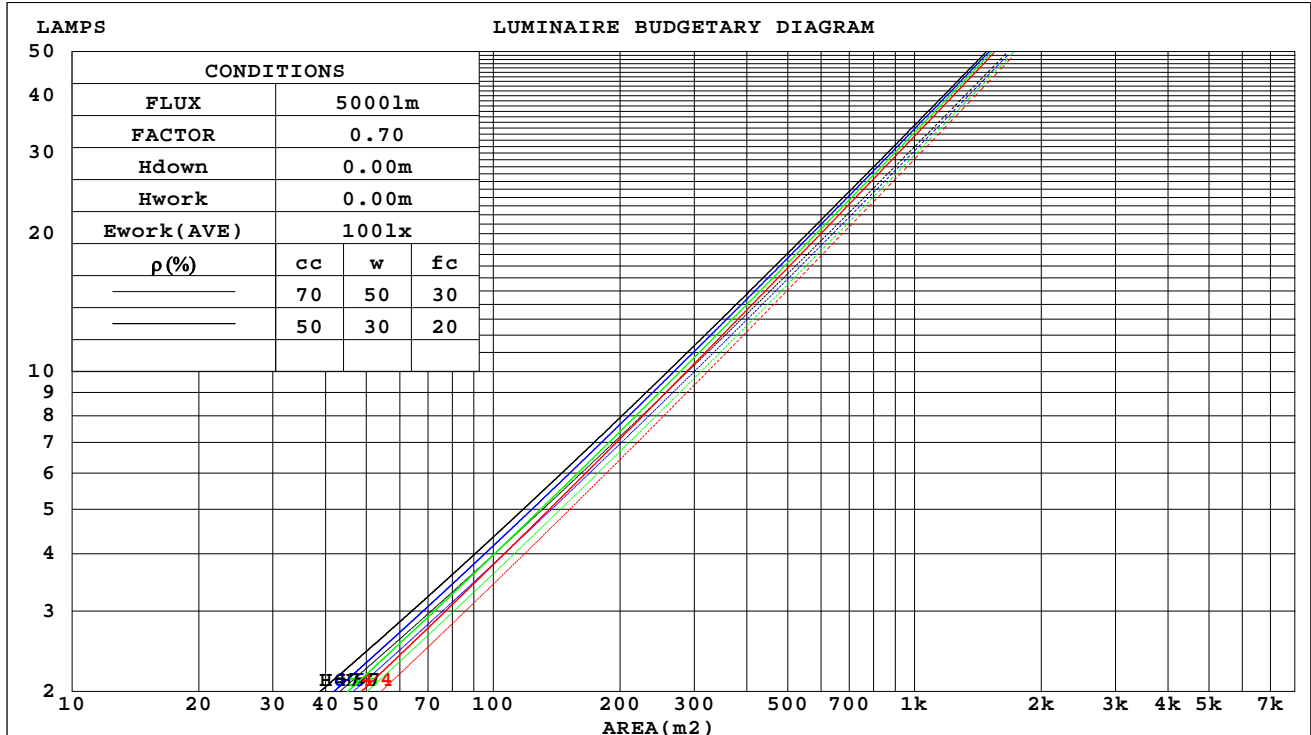
SERIAL No.: 2409121199

MFR.: RISE

SUR.: 0.001884785m2

Shielding Angle:

ρ_{cc}	80%			70%			50%			30%			10%			0
ρ_w	50%	30%	10%	50%	30%	10%	50%	30%	10%	50%	30%	10%	50%	30%	10%	0
ρ_{fc}	20%			20%			20%			20%			20%			0
RCR	RCR:Room Cavity Ratio			Coefficients of Utilization(CU)												
0.0	1.02	1.02	1.02	.99	.99	.99	.95	.95	.95	.91	.91	.91	.87	.87	.87	.85
1.0	.96	.94	.92	.94	.92	.91	.91	.89	.88	.87	.86	.86	.84	.84	.83	.82
2.0	.91	.88	.85	.89	.87	.84	.86	.84	.83	.84	.82	.81	.82	.80	.79	.78
3.0	.86	.83	.80	.85	.82	.79	.83	.80	.78	.81	.79	.77	.79	.77	.76	.74
4.0	.82	.78	.75	.81	.78	.75	.79	.76	.74	.78	.75	.73	.76	.74	.72	.71
5.0	.78	.74	.71	.78	.74	.71	.76	.73	.70	.75	.72	.70	.74	.71	.69	.68
6.0	.75	.71	.68	.74	.70	.68	.73	.70	.67	.72	.69	.67	.71	.68	.66	.65
7.0	.72	.68	.65	.71	.67	.65	.70	.67	.64	.69	.66	.64	.68	.66	.64	.63
8.0	.69	.65	.62	.68	.65	.62	.68	.64	.62	.67	.64	.61	.66	.63	.61	.60
9.0	.66	.62	.60	.66	.62	.59	.65	.62	.59	.65	.61	.59	.64	.61	.59	.58
10.0	.64	.60	.57	.63	.60	.57	.63	.59	.57	.62	.59	.57	.62	.59	.57	.56



C Range: 0 - 360DEG
C Interval: 30.0DEG
Test Speed: HIGH
Temperature:25.3℃
Operators:zoe
Test Date:2024-9-12

γ Range: 0 - 180DEG
 γ Interval: 1.0DEG
Test System:EVERFINE GO-SPEX500_V1 SYSTEM V2.00.461
Humidity:65.0%
Test Distance:3.160m [K=1.0000]
Remarks: LAMP:BXRH-30G10T0-C-83 Ra:90
LENS:PM-1082B 36R
DRIVER:SC20W150-500CG-4W 300mA
30minutes warm-up

WEC AND CCEC

Test:U:220.18V I:0.0593A P:11.226W PF:0.8546 Freq:49.99Hz Lamp Flux:1227.27x1 lm		
NAME: 2419.205-UA-300	TYPE:	WEIGHT:
SPEC.: 3000K	DIM.:	SERIAL No.: 2409121199
MFR.: RISE	SUR.: 0.001884785m2	Shielding Angle:

pcc	80%			70%			50%			30%			10%			0	
pw	50%	30%	10%	50%	30%	10%	50%	30%	10%	50%	30%	10%	50%	30%	10%	0	
pfc	20%			20%			20%			20%			20%			0	
RCR	RCR:Room Cavity Ratio						Wall Exitance Coefficients(WEC)										
0.0																	
1.0	.128	.073	.023	.122	.070	.022	.112	.064	.020	.102	.059	.019	.093	.054	.017		
2.0	.120	.066	.020	.115	.063	.020	.106	.059	.018	.098	.055	.017	.091	.051	.016		
3.0	.113	.060	.018	.109	.058	.018	.102	.055	.017	.095	.052	.016	.088	.049	.015		
4.0	.107	.055	.016	.103	.054	.016	.097	.051	.015	.091	.049	.015	.086	.047	.014		
5.0	.101	.052	.015	.098	.050	.015	.093	.048	.014	.088	.046	.014	.083	.044	.013		
6.0	.096	.048	.014	.094	.047	.014	.089	.046	.013	.085	.044	.013	.081	.042	.013		
7.0	.092	.045	.013	.090	.045	.013	.086	.043	.012	.082	.042	.012	.078	.041	.012		
8.0	.088	.043	.012	.086	.042	.012	.082	.041	.012	.079	.040	.012	.076	.039	.011		
9.0	.084	.041	.011	.083	.040	.011	.079	.039	.011	.076	.038	.011	.074	.037	.011		
10.0	.081	.039	.011	.080	.038	.011	.077	.038	.011	.074	.037	.010	.071	.036	.010		

pcc	80%			70%			50%			30%			10%			0
pw	50%	30%	10%	50%	30%	10%	50%	30%	10%	50%	30%	10%	50%	30%	10%	0
pfc	20%			20%			20%			20%			20%			0
RCR	RCR:Room Cavity Ratio						Ceiling Cavity Exitance Coefficients(CCEC)									
0.0	.163	.163	.163	.139	.139	.139	.095	.095	.095	.054	.054	.054	.017	.017	.017	
1.0	.144	.134	.125	.124	.115	.108	.085	.079	.075	.049	.046	.043	.016	.015	.014	
2.0	.130	.113	.099	.111	.097	.086	.076	.067	.060	.044	.039	.035	.014	.013	.011	
3.0	.118	.097	.080	.101	.083	.069	.069	.058	.049	.040	.034	.029	.013	.011	.009	
4.0	.108	.084	.066	.092	.072	.057	.064	.050	.040	.037	.030	.024	.012	.010	.008	
5.0	.099	.074	.054	.085	.064	.047	.059	.044	.033	.034	.026	.020	.011	.009	.007	
6.0	.092	.065	.046	.079	.056	.040	.055	.040	.028	.032	.023	.017	.010	.008	.006	
7.0	.086	.058	.039	.074	.051	.034	.051	.035	.024	.030	.021	.014	.010	.007	.005	
8.0	.081	.053	.033	.070	.046	.029	.048	.032	.021	.028	.019	.012	.009	.006	.004	
9.0	.076	.048	.029	.066	.042	.025	.046	.029	.018	.027	.017	.011	.009	.006	.004	
10.0	.072	.044	.025	.062	.038	.022	.043	.027	.016	.025	.016	.009	.008	.005	.003	

C Range: 0 - 360DEG
C Interval: 30.0DEG
Test Speed: HIGH
Temperature:25.3℃
Operators:zoe
Test Date:2024-9-12

γ Range: 0 - 180DEG
γ Interval: 1.0DEG
Test System:EVERFINE GO-SPEX500_V1 SYSTEM V2.00.461
Humidity:65.0%
Test Distance:3.160m [K=1.0000]
Remarks: LAMP:BXRH-30G10T0-C-83 Ra:90
LENS:PM-1082B 36R
DRIVER:SC20W150-500CG-4W 300mA
30minutes warm-up

UGR(Unified Glare Rating) Table

Test:U:220.18V I:0.0593A P:11.226W PF:0.8546 Freq:49.99Hz Lamp Flux:1227.27x1 lm										
NAME: 2419.205-UA-300					TYPE:			WEIGHT:		
SPEC.: 3000K					DIM.:			SERIAL No.: 2409121199		
MFR.: RISE					SUR.: 0.001884785m2			Shielding Angle:		
ceiling/cavity	0.7	0.7	0.5	0.5	0.3	0.7	0.7	0.5	0.5	0.3
walls	0.5	0.3	0.5	0.3	0.3	0.5	0.3	0.5	0.3	0.3
working plane	0.2	0.2	0.2	0.2	0.2	0.2	0.2	0.2	0.2	0.2
Room dimensions	Viewed crosswise					Viewed endwise				
x = 2H y = 2H	12.3	13.0	12.5	13.2	13.3	12.6	13.4	12.8	13.5	13.7
3H	12.1	12.8	12.3	13.0	13.2	12.5	13.2	12.7	13.3	13.5
4H	12.0	12.7	12.3	12.9	13.1	12.4	13.0	12.6	13.3	13.5
6H	11.9	12.5	12.2	12.8	13.0	12.3	12.9	12.6	13.2	13.4
8H	11.9	12.5	12.2	12.7	13.0	12.3	12.9	12.6	13.1	13.4
12H	11.8	12.4	12.1	12.7	12.9	12.2	12.8	12.5	13.0	13.3
4H 2H	12.0	12.7	12.3	12.9	13.1	12.4	13.1	12.7	13.3	13.5
3H	11.9	12.4	12.2	12.7	13.0	12.2	12.8	12.5	13.1	13.3
4H	11.8	12.3	12.1	12.6	12.9	12.1	12.7	12.5	12.9	13.2
6H	11.7	12.1	12.0	12.5	12.8	12.0	12.5	12.4	12.8	13.2
8H	11.6	12.0	12.0	12.4	12.7	12.0	12.4	12.4	12.8	13.1
12H	11.6	11.9	12.0	12.3	12.7	11.9	12.3	12.3	12.7	13.1
8H 4H	11.6	12.0	12.0	12.4	12.7	12.0	12.4	12.4	12.8	13.1
6H	11.5	11.9	11.9	12.2	12.7	11.9	12.2	12.3	12.6	13.0
8H	11.4	11.8	11.9	12.2	12.6	11.8	12.1	12.3	12.5	13.0
12H	11.4	11.7	11.8	12.1	12.6	11.7	12.0	12.2	12.5	12.9
12H 4H	11.6	11.9	12.0	12.3	12.7	11.9	12.3	12.3	12.7	13.1
6H	11.4	11.8	11.9	12.2	12.6	11.8	12.1	12.3	12.5	13.0
8H	11.4	11.7	11.8	12.1	12.6	11.7	12.0	12.2	12.5	12.9
Variations with the observer position at spacings(CIE Pub.117):										
S = 1.0H	+ 2.8 / -10.4					+ 2.7 / -10.3				
1.5H	+ 4.1 / - 6.9					+ 3.9 / - 7.3				
2.0H	+ 5.9 / -16.7					+ 5.8 / -16.9				

CIE Pub.117, 1227 lm Total Lamp Luminous Flux Correct (8log(F/F0) = 0.7)
Area: 0.00188479 m2

C Range: 0 - 360DEG
C Interval: 30.0DEG
Test Speed: HIGH
Temperature:25.3℃
Operators:zoe
Test Date:2024-9-12

γ Range: 0 - 180DEG
γ Interval: 1.0DEG
Test System:EVERFINE GO-SPEX500_V1 SYSTEM V2.00.461
Humidity:65.0%
Test Distance:3.160m [K=1.0000]
Remarks: LAMP:BXRH-30G10T0-C-83 Ra:90
LENS:PM-1082B 36R
DRIVER:SC20W150-500CG-4W 300mA
30minutes warm-up

UTILIZATION FACTORS TABLE

Test:U:220.18V I:0.0593A P:11.226W PF:0.8546 Freq:49.99Hz Lamp Flux:1227.27x1 lm		
NAME: 2419.205-UA-300	TYPE:	WEIGHT:
SPEC.: 3000K	DIM.:	SERIAL No.: 2409121199
MFR.: RISE	SUR.: 0.001884785m2	Shielding Angle:

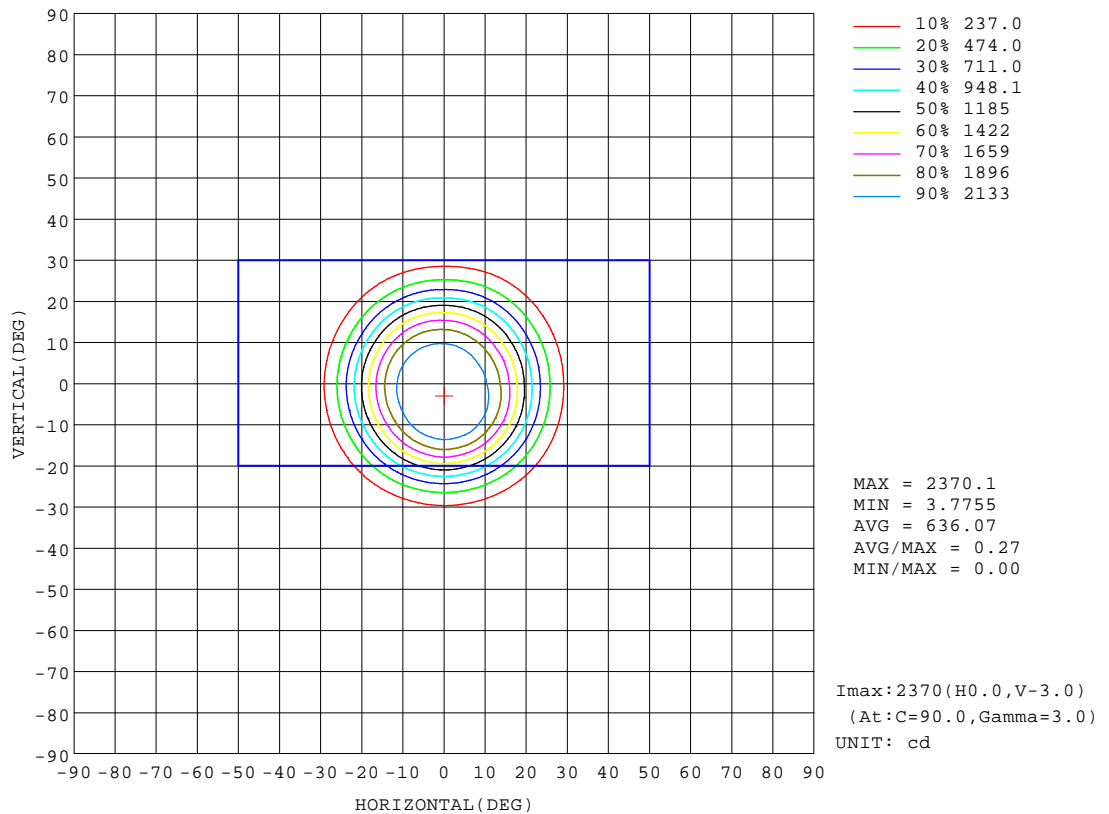
REFLECTANCE										
Ceiling	0.8	0.8	0.8	0.7	0.7	0.7	0.5	0.5	0.5	0
Walls	0.7	0.5	0.3	0.7	0.5	0.3	0.7	0.5	0.3	0
Working plane	0.2	0.2	0.2	0.2	0.2	0.2	0.2	0.2	0.2	0
ROOM INDEX	UTILIZATION FACTORS(PERCENT) $k(RI) \times RCR = 5$									
k = 0.60	77	72	69	76	72	69	76	71	69	66
0.80	83	78	75	82	78	75	81	78	75	72
1.00	86	82	79	86	82	79	84	81	78	75
1.25	89	85	83	89	85	82	87	84	82	78
1.50	92	88	85	91	87	85	89	86	84	80
2.00	93	90	88	92	89	87	90	88	86	82
2.50	95	92	89	93	91	89	91	89	87	82
3.00	96	93	91	94	92	90	92	90	88	83
4.00	98	95	94	96	94	93	93	91	90	84
5.00	99	97	95	97	95	94	93	92	91	85
ROOM INDEX	UF(total)									Direct
According to DIN EN 13032-2 2004			Suspended					SHRNOM = 1.25		

C Range: 0 - 360DEG
C Interval: 30.0DEG
Test Speed: HIGH
Temperature:25.3℃
Operators:zoe
Test Date:2024-9-12

γ Range: 0 - 180DEG
γ Interval: 1.0DEG
Test System:EVERFINE GO-SPEX500_V1 SYSTEM V2.00.461
Humidity:65.0%
Test Distance:3.160m [K=1.0000]
Remarks: LAMP:BXRH-30G10T0-C-83 Ra:90
LENS:PM-1082B 36R
DRIVER:SC20W150-500CG-4W 300mA
30minutes warm-up

ISOCANDELA DIAGRAM

Test:U:220.18V I:0.0593A P:11.226W PF:0.8546 Freq:49.99Hz Lamp Flux:1227.27x1 lm		
NAME: 2419.205-UA-300	TYPE:	WEIGHT:
SPEC.: 3000K	DIM.:	SERIAL No.: 2409121199
MFR.: RISE	SUR.: 0.001884785m2	Shielding Angle:

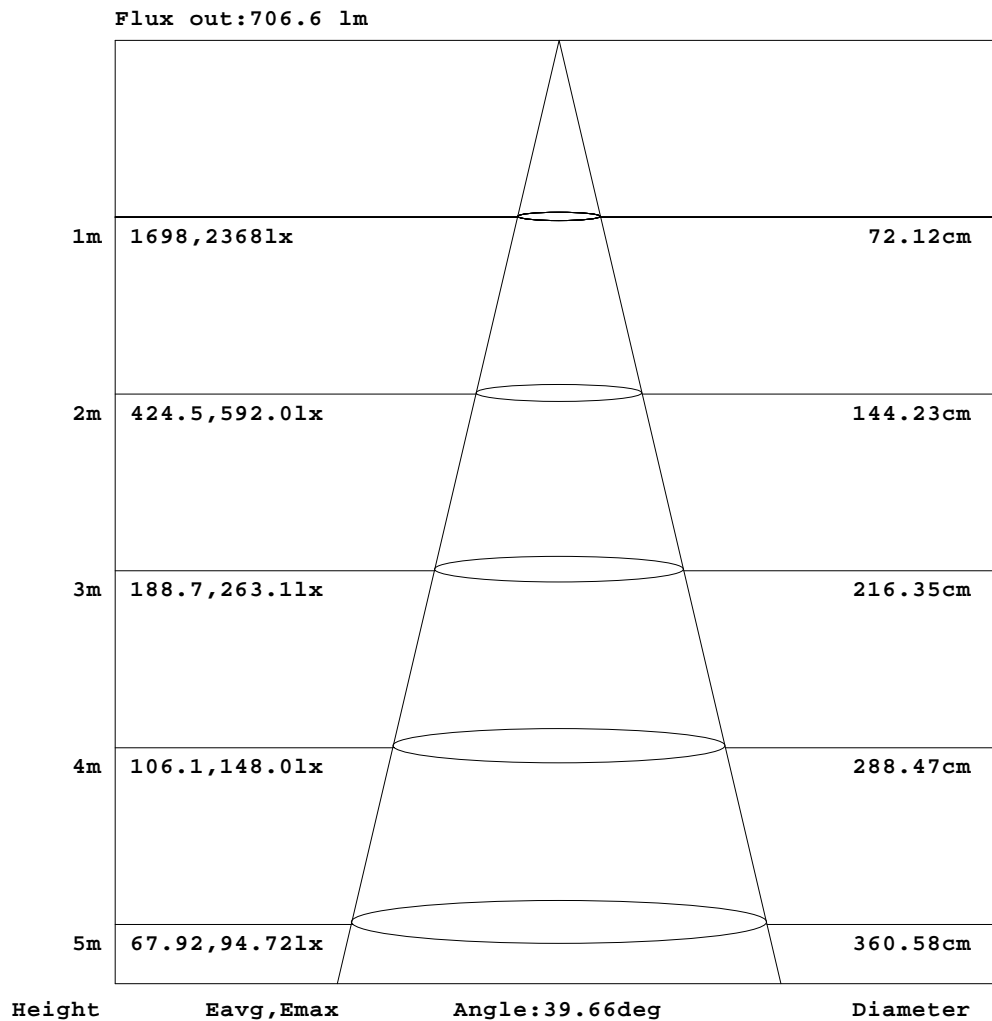


C Range: 0 - 360DEG
C Interval: 30.0DEG
Test Speed: HIGH
Temperature: 25.3 °C
Operators: zoe
Test Date: 2024-9-12

γ Range: 0 - 180DEG
γ Interval: 1.0DEG
Test System: EVERFINE GO-SPEX500_V1 SYSTEM V2.00.461
Humidity: 65.0%
Test Distance: 3.160m [K=1.0000]
Remarks: LAMP: BXRH-30G10T0-C-83 Ra: 90
LENS: PM-1082B 36R
DRIVER: SC20W150-500CG-4W 300mA
30minutes warm-up

AAI Figure

Test:U:220.18V I:0.0593A P:11.226W PF:0.8546 Freq:49.99Hz Lamp Flux:1227.27x1 lm		
NAME: 2419.205-UA-300	TYPE:	WEIGHT:
SPEC.: 3000K	DIM.:	SERIAL No.: 2409121199
MFR.: RISE	SUR.: 0.001884785m2	Shielding Angle:



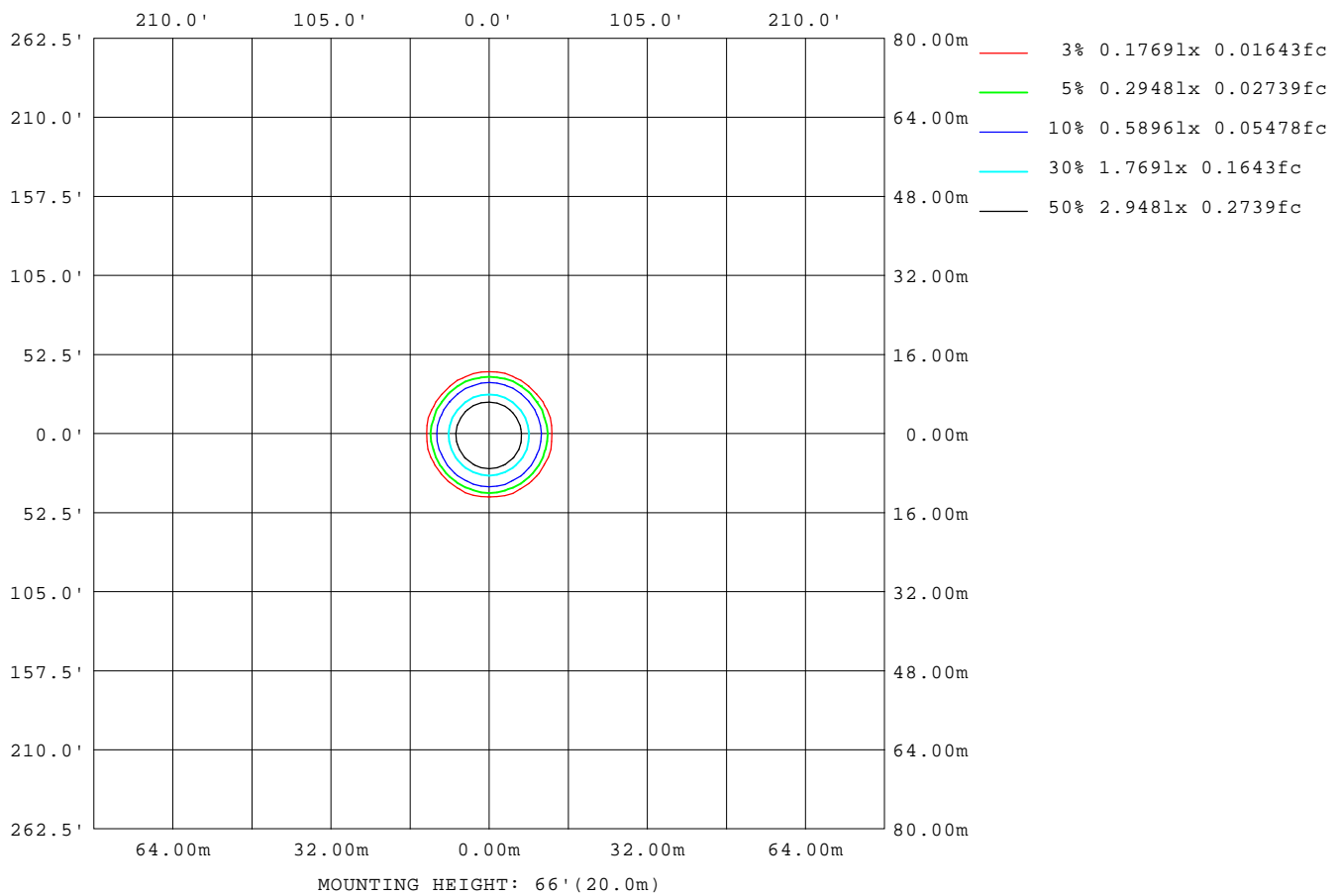
Note:The Curves indicate the illuminated area and the average illumination when the luminaire is at different distance.

C Range: 0 - 360DEG
C Interval: 30.0DEG
Test Speed: HIGH
Temperature:25.3℃
Operators:zoe
Test Date:2024-9-12

γ Range: 0 - 180DEG
γ Interval: 1.0DEG
Test System:EVERFINE GO-SPEX500_V1 SYSTEM V2.00.461
Humidity:65.0%
Test Distance:3.160m [K=1.0000]
Remarks: LAMP:BXRH-30G10T0-C-83 Ra:90
LENS:PM-1082B 36R
DRIVER:SC20W150-500CG-4W 300mA
30minutes warm-up

ISOLUX DIAGRAM

Test:U:220.18V I:0.0593A P:11.226W PF:0.8546 Freq:49.99Hz Lamp Flux:1227.27x1 lm		
NAME: 2419.205-UA-300	TYPE:	WEIGHT:
SPEC.: 3000K	DIM.:	SERIAL No.: 2409121199
MFR.: RISE	SUR.: 0.001884785m2	Shielding Angle:



C Range: 0 - 360DEG
C Interval: 30.0DEG
Test Speed: HIGH
Temperature:25.3 °C
Operators:zoe
Test Date:2024-9-12

γ Range: 0 - 180DEG
γ Interval: 1.0DEG
Test System:EVERFINE GO-SPEX500_V1 SYSTEM V2.00.461
Humidity:65.0%
Test Distance:3.160m [K=1.0000]
Remarks: LAMP:BXRH-30G10T0-C-83 Ra:90
LENS:PM-1082B 36R
DRIVER:SC20W150-500CG-4W 300mA
30minutes warm-up

LED Avg.L Report

Test:U:220.18V I:0.0593A P:11.226W PF:0.8546 Freq:49.99Hz Lamp Flux:1227.27x1 lm		
NAME: 2419.205-UA-300	TYPE:	WEIGHT:
SPEC.: 3000K	DIM.:	SERIAL No.: 2409121199
MFR.: RISE	SUR.: 0.001884785m2	Shielding Angle:

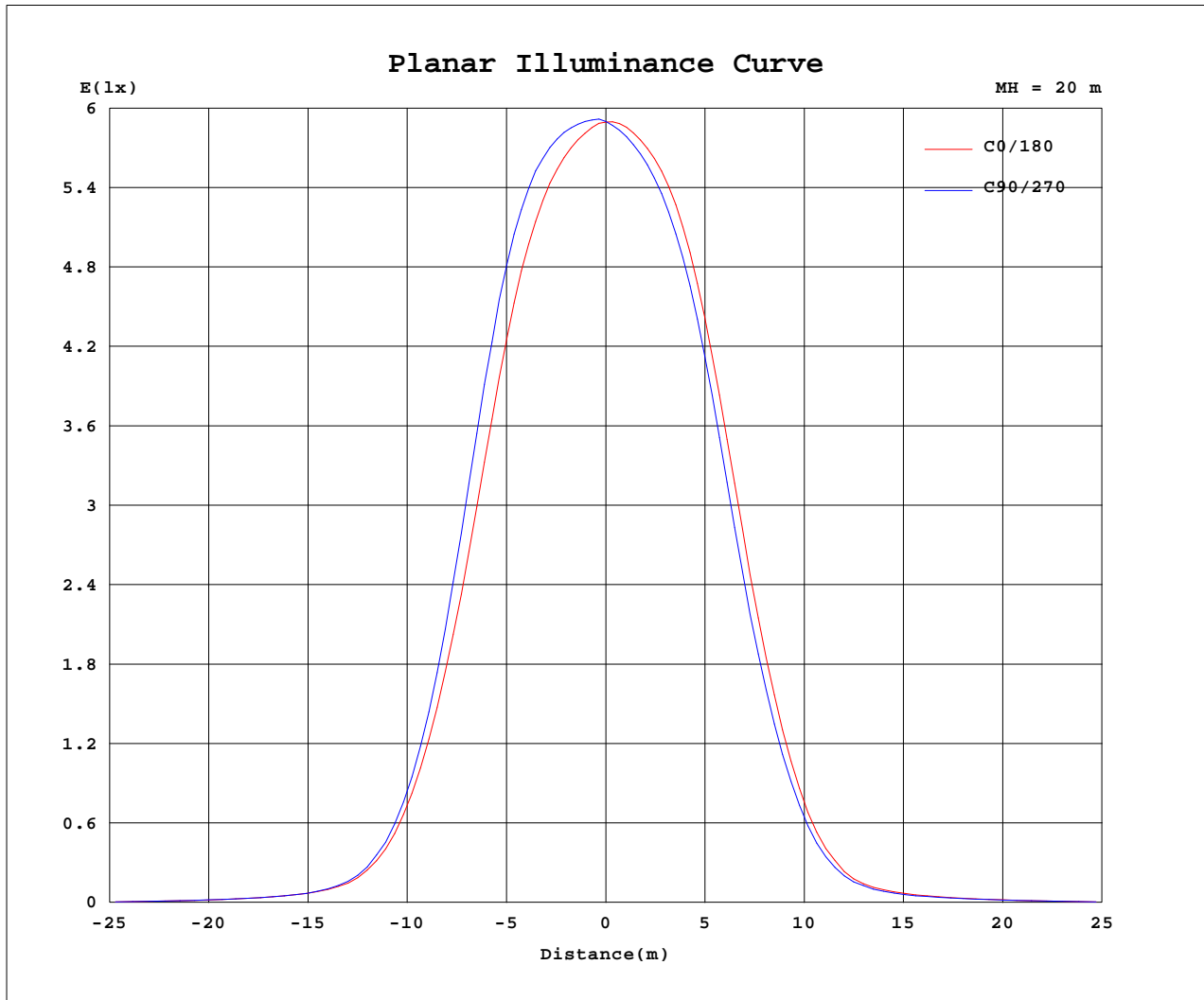
AvgL	cd/m2
L_0~180(65)av	359
L_0~180(75)av	167
L_0~180(85)av	201
L_90~270(65)av	344
L_90~270(75)av	163
L_90~270(85)av	203
L_45(65)av	346
L_45(75)av	151
L_45(85)av	136

Standard: GB/T 29293-2012

C Range: 0 - 360DEG
C Interval: 30.0DEG
Test Speed: HIGH
Temperature:25.3℃
Operators:zoe
Test Date:2024-9-12

γ Range: 0 - 180DEG
γ Interval: 1.0DEG
Test System:EVERFINE GO-SPEX500_V1 SYSTEM V2.00.461
Humidity:65.0%
Test Distance:3.160m [K=1.0000]
Remarks: LAMP:BXRH-30G10T0-C-83 Ra:90
LENS:PM-1082B 36R
DRIVER:SC20W150-500CG-4W 300mA
30minutes warm-up

Planar Illuminance Curve



C Range: 0 - 360DEG
 C Interval: 30.0DEG
 Test Speed: HIGH
 Temperature: 25.3 °C
 Operators: zoe
 Test Date: 2024-9-12

γ Range: 0 - 180DEG
 γ Interval: 1.0DEG
 Test System: EVERFINE GO-SPEX500_V1 SYSTEM V2.00.461
 Humidity: 65.0%
 Test Distance: 3.160m [K=1.0000]
 Remarks: LAMP: BXRH-30G10T0-C-83 Ra:90
 LENS: PM-1082B 36R
 DRIVER: SC20W150-500CG-4W 300mA
 30minutes warm-up



LUMINOUS DISTRIBUTION INTENSITY DATA

Test:U:220.18V I:0.0593A P:11.226W PF:0.8546 Freq:49.99Hz Lamp Flux:1227.27x1 lm		
NAME: 2419.205-UA-300	TYPE:	WEIGHT:
SPEC.: 3000K	DIM.:	SERIAL No.: 2409121199
MFR.: RISE	SUR.: 0.001884785m2	Shielding Angle:

Table--1

UNIT: cd

C(DEG) γ (DEG)	0	30	60	90	120	150	180	210	240	270	300	330						
0	2360	2360	2360	2360	2360	2360	2360	2360	2360	2360	2360	2360						
5	2309	2340	2362	2368	2361	2346	2332	2310	2294	2289	2286	2290						
10	2156	2236	2290	2315	2287	2235	2210	2174	2141	2116	2107	2108						
15	1763	1893	1994	2022	1962	1873	1833	1787	1751	1701	1690	1692						
20	1124	1231	1310	1346	1302	1233	1194	1120	1089	1050	1065	1070						
25	547	593	624	635	619	588	575	519	502	492	519	522						
30	196	214	216	222	207	200	197	172	170	164	178	181						
35	72.3	76.9	80.3	75.5	71.4	71.2	70.2	67.4	66.8	61.7	63.4	68.3						
40	39.3	39.6	41.7	39.2	37.7	40.3	39.8	38.0	38.8	36.0	36.1	38.6						
45	22.7	22.3	24.0	23.9	23.6	24.3	23.9	22.3	23.2	22.4	22.3	22.8						
50	11.6	11.6	12.2	12.7	12.7	13.1	12.8	12.3	12.6	12.2	11.9	12.0						
55	4.83	4.88	4.87	5.23	5.35	5.41	5.31	5.33	5.39	5.13	4.81	4.92						
60	1.13	1.36	1.38	1.48	1.44	1.62	1.55	1.54	1.50	1.54	1.32	1.19						
65	0.27	0.28	0.28	0.28	0.28	0.30	0.30	0.28	0.27	0.27	0.26	0.25						
70	0.12	0.12	0.13	0.13	0.13	0.14	0.13	0.12	0.11	0.11	0.10	0.11						
75	0.08	0.08	0.08	0.09	0.08	0.08	0.08	0.07	0.07	0.07	0.06	0.07						
80	0.05	0.05	0.05	0.06	0.05	0.05	0.05	0.04	0.04	0.05	0.04	0.04						
85	0.04	0.03	0.03	0.04	0.02	0.02	0.03	0.02	0.02	0.03	0.02	0.02						
90	0.00	0.00	0.00	0.00	0.00	0.00	0.00	0.00	0.00	0.00	0.00	0.00						
95	0.00	0.00	0.00	0.00	0.00	0.00	0.00	0.00	0.00	0.00	0.00	0.00						
100	0.00	0.00	0.00	0.00	0.00	0.00	0.00	0.00	0.00	0.00	0.00	0.00						
105	0.00	0.00	0.00	0.00	0.00	0.00	0.00	0.00	0.00	0.00	0.00	0.00						
110	0.00	0.00	0.00	0.00	0.00	0.00	0.00	0.00	0.00	0.00	0.00	0.00						
115	0.00	0.00	0.00	0.00	0.00	0.00	0.00	0.00	0.00	0.00	0.00	0.00						
120	0.00	0.00	0.00	0.00	0.00	0.00	0.00	0.00	0.00	0.00	0.00	0.00						
125	0.00	0.00	0.00	0.00	0.00	0.00	0.00	0.00	0.00	0.00	0.00	0.00						
130	0.00	0.00	0.00	0.00	0.00	0.00	0.00	0.00	0.00	0.00	0.00	0.00						
135	0.00	0.00	0.00	0.00	0.00	0.00	0.00	0.00	0.00	0.00	0.00	0.00						
140	0.00	0.00	0.00	0.00	0.00	0.00	0.00	0.00	0.00	0.00	0.00	0.00						
145	0.00	0.00	0.00	0.00	0.00	0.00	0.00	0.00	0.00	0.00	0.00	0.00						
150	0.00	0.00	0.00	0.00	0.00	0.00	0.00	0.00	0.00	0.00	0.00	0.00						
155	0.00	0.00	0.00	0.00	0.00	0.00	0.00	0.00	0.00	0.00	0.00	0.00						
160	0.00	0.00	0.00	0.00	0.00	0.00	0.00	0.00	0.00	0.00	0.00	0.00						
165	0.00	0.00	0.00	0.00	0.00	0.00	0.00	0.00	0.00	0.00	0.00	0.00						
170	0.00	0.00	0.00	0.00	0.00	0.00	0.00	0.00	0.00	0.00	0.00	0.00						
175	0.00	0.00	0.00	0.00	0.00	0.00	0.00	0.00	0.00	0.00	0.00	0.00						
180	0.00	0.00	0.00	0.00	0.00	0.00	0.00	0.00	0.00	0.00	0.00	0.00						

C Range: 0 - 360DEG
C Interval: 30.0DEG
Test Speed: HIGH
Temperature:25.3℃
Operators:zoe
Test Date:2024-9-12

γ Range: 0 - 180DEG
γ Interval: 1.0DEG
Test System:EVERFINE GO-SPEX500_V1 SYSTEM V2.00.461
Humidity:65.0%
Test Distance:3.160m [K=1.0000]
Remarks: LAMP:BXRH-30G10T0-C-83 Ra:90
LENS:PM-1082B 36R
DRIVER:SC20W150-500CG-4W 300mA
30minutes warm-up